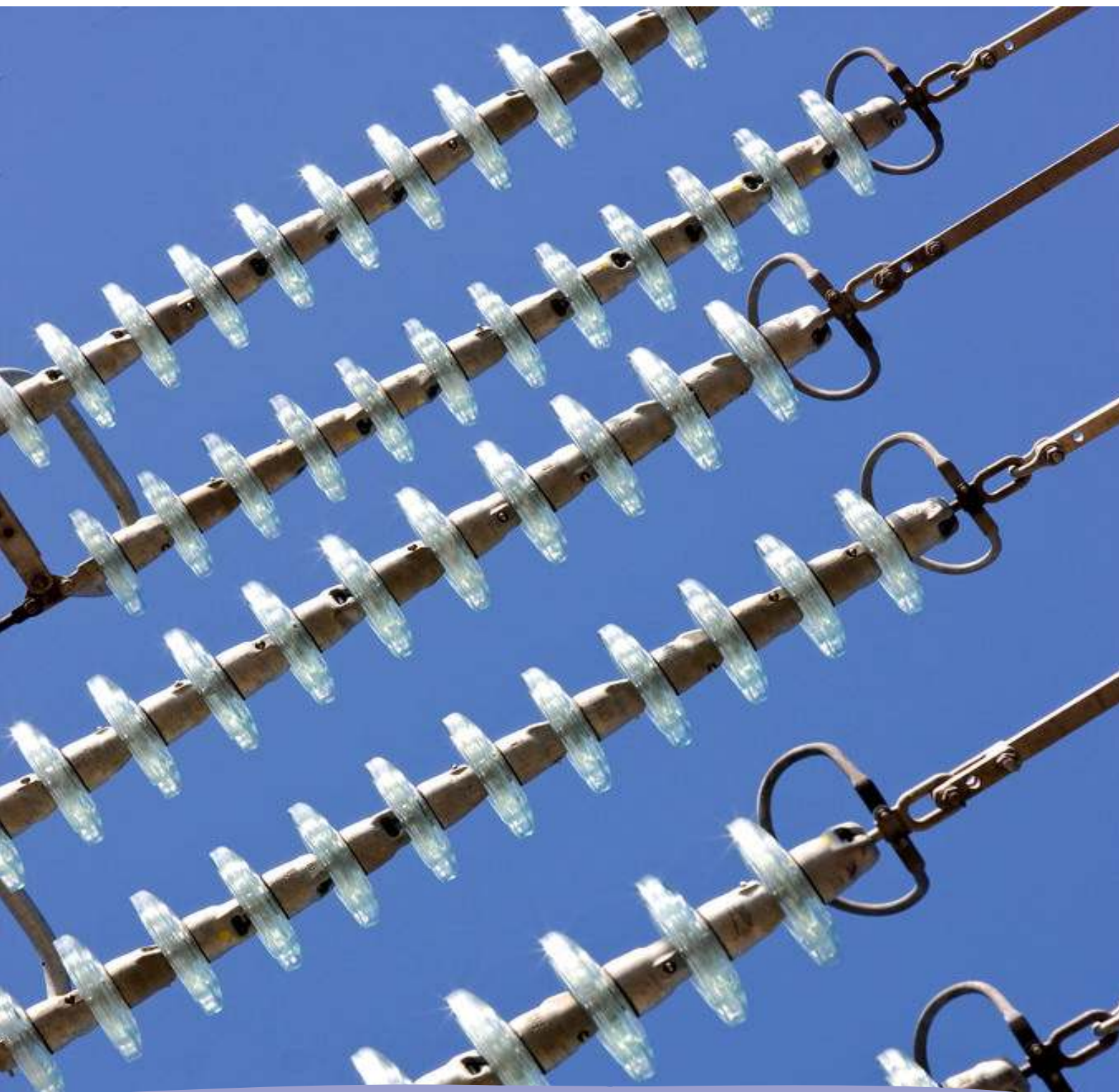


# Monthly statistics



## March 2013

Monthly provisional values as of 09 July 2013

European Network of  
Transmission System Operators  
for Electricity

entsoe

| <b>Table of contents</b> |  | Page |
|--------------------------|--|------|
| 1                        | Electricity supply situation of the countries              | 2    |
| 2                        | Electricity supply representativity of the countries       | 3    |
| 3                        | Physical energy flows                                      | 4    |
| 4                        | Overview of the detailed physical energy flows             | 5    |
| 5                        | Load flows (night)   | 6    |
| 6                        | Load flows (day)   | 7    |
| 7                        | Unavailability of international tie lines ( major events ) | 8    |
| 8                        | Network reliability ( major events )                       | 10   |
| 9                        | Highest and lowest load on the 3 <sup>rd</sup> Wednesday   | 11   |
| 10                       | Load diagrams on the 3 <sup>rd</sup> Wednesday             | 12   |
| 11                       | Water reservoirs Nordic                                    | 13   |

#### **General remarks and abbreviations used in the tables**

- All values of generation and consumption on page 2, 11 and 12 are calculated to represent 100% of the national values.
- All data with the country code GB represents monthly statistical data as sum of England, Scotland and Wales.
- All data with the country code NI represents the monthly statistical data of the Northern Ireland.
- CET Central European Time

| Countries       | Net generation in GWh |               |              |              |               |                |                   |                  |                           | Exchange balance<br>in GWh | Pump<br>in GWh | Consumption   |             |
|-----------------|-----------------------|---------------|--------------|--------------|---------------|----------------|-------------------|------------------|---------------------------|----------------------------|----------------|---------------|-------------|
|                 | Therm. nuclear        | Fossil fuels  | Hydro power  | Other renew. | of which wind | of which solar | of which bio-mass | Non identifiable | Total                     |                            |                | monthly [GWh] | var. [%]    |
| AT              | 0                     | 1785          | 3050         | 0            | 0             | 0              | 0                 | 831              | 5666                      | 1104                       | 504            | 6266          | 3,4         |
| BA              | 0                     | 659           | 1119         | 0            | 0             | 0              | 0                 | 0                | 1778                      | -718                       | 0              | 1060          | 3,9         |
| BE <sup>2</sup> | 2896                  | 2814          | 144          | 748          | 282           | 167            | 299               | 0                | 6602 <sup>1</sup>         | 1331                       | 136            | 7797          | 4,1         |
| BG              | 1434                  | 1051          | 503          | 216          | 131           | 85             | 0                 | 0                | 3204                      | -210                       | 114            | 2880          | -3,3        |
| CH              | 2437                  | 202           | 2309         | 148          | 9             | 0              | 0                 | 0                | 5096 <sup>1</sup>         | 933                        | 87             | 5942          | 5,1         |
| CY              | 0                     | 275           | 0            | 25           | 25            | 0              | 0                 | 0                | 300                       | 0                          | 0              | 300           | -16,2       |
| CZ              | 2517                  | 4451          | 391          | 206          | 47            | 159            | 137               | 0                | 7565 <sup>1</sup>         | -1536                      | 114            | 5915          | 5,7         |
| DE <sup>3</sup> | 8883                  | 33046         | 2161         | 10103        | 4676          | 2303           | 2932              | 0                | 54193 <sup>1</sup>        | -4919                      | 609            | 48665         | 1,8         |
| DK <sup>4</sup> | 0                     | 1378          | 2            | 1292         | 1073          | 0              | 219               | 0                | 2672 <sup>1</sup>         | 308                        | 0              | 2980          | n.a.        |
| EE              | 0                     | 1004          | 2            | 90           | 45            | 0              | 46                | 0                | 1096                      | -285                       | 0              | 811           | 7,7         |
| ES              | 5194                  | 6604          | 5009         | 7029         | 5870          | 688            | 472               | 141              | 23977                     | -430                       | 1052           | 22495         | -0,3        |
| FI              | 2049                  | 2689          | 1237         | 1183         | 63            | 0              | 1120              | 88               | 7246 <sup>1</sup>         | 1134                       | 0              | 8380          | 8,5         |
| FR              | 36782                 | 6440          | 6476         | 2189         | 1338          | 312            | 540               | 0                | 51887                     | -1787                      | 597            | 49503         | 14,8        |
| GB              | 5398                  | 14319         | 421          | 2806         | 1515          | 0              | 0                 | 0                | 22944                     | 1019                       | 363            | 23600         | -19,0       |
| GR              | 0                     | 2369          | 1127         | 581          | 366           | 197            | 18                | 0                | 4077 <sup>1</sup>         | 32                         | 0              | 4109          | -2,9        |
| HR              | 0                     | 388           | 1007         | 65           | 55            | 0              | 10                | 0                | 1460                      | 73                         | 9              | 1524          | 8,5         |
| HU              | 1523                  | 1302          | 0            | 0            | 0             | 0              | 0                 | 0                | 2825                      | 847                        | 0              | 3672          | 9,1         |
| IE              | 0                     | 1885          | 78           | 438          | 432           | 0              | 0                 | 12               | 2413 <sup>1</sup>         | 17                         | 52             | 2378          | 7,0         |
| IS              | 0                     | 0             | 1118         | 430          | 0             | 0              | 0                 | 0                | 1548                      | 0                          | 0              | 1548          | 4,9         |
| IT              | 0                     | 15939         | 3743         | 3827         | 1882          | 1506           | 0                 | 0                | 23509                     | 3685                       | 216            | 26978         | -1,6        |
| LT              | 0                     | 262           | 79           | 89           | 64            | 2              | 23                | 0                | 430 <sup>1</sup>          | 567                        | 48             | 949           | 3,5         |
| LU              | 0                     | 210           | 110          | 20           | 6             | 4              | 4                 | 0                | 340                       | 342                        | 132            | 550           | -3,7        |
| LV              | 0                     | 305           | 164          | 46           | 9             | 0              | 14                | 0                | 515                       | 189                        | 0              | 704           | 2,5         |
| ME <sup>5</sup> | 0                     | 125           | 175          | 0            | 0             | 0              | 0                 | 0                | 300                       | 70                         | 0              | 370           | n.a.        |
| MK              | 0                     | 282           | 209          | 0            | 0             | 0              | 0                 | 0                | 491                       | 260                        | 0              | 751           | -1,8        |
| NI              | 0                     | 561           | 1            | 118          | 112           | 0              | 2                 | 0                | 680                       | 139                        | 0              | 819           | 6,0         |
| NL              | 382                   | 7135          | 0            | 1191         | 584           | n.a.           | n.a.              | 0                | 8708                      | 1052                       | 0              | 9760          | -5,6        |
| NO              | 0                     | 186           | 11951        | 170          | 170           | 0              | 0                 | 0                | 12307 <sup>1</sup>        | 768                        | 54             | 13021         | 13,0        |
| PL <sup>6</sup> | 0                     | 12237         | 297          | 1031         | 456           | 0              | 464               | 0                | 13565 <sup>1</sup>        | -543                       | 69             | 12953         | 2,2         |
| PT              | 0                     | 989           | 2243         | 1803         | 1545          | 25             | 232               | 0                | 5035 <sup>1</sup>         | -620                       | 110            | 4305          | 4,9         |
| RO              | 940                   | 1987          | 1333         | 510          | 474           | 8              | 28                | 0                | 4770                      | -93                        | 13             | 4664          | -1,8        |
| RS              | 0                     | 2593          | 1513         | 0            | 0             | 0              | 0                 | 0                | 4106                      | -141                       | 106            | 3859          | 6,7         |
| SE              | 6405                  | 813           | 6115         | 1964         | 822           | 0              | 1142              | 0                | 15297 <sup>1</sup>        | -936                       | 0              | 14361         | 12,7        |
| SI              | 469                   | 376           | 372          | 0            | 0             | 0              | 0                 | 0                | 1217                      | -101                       | 0              | 1116          | 4,6         |
| SK              | 1343                  | 502           | 488          | 62           | 0             | 46             | 0                 | 101              | 2496 <sup>1</sup>         | -87                        | 32             | 2377          | 0,9         |
| <b>ENTSO-E</b>  | <b>78652</b>          | <b>127163</b> | <b>54947</b> | <b>38380</b> | <b>22051</b>  | <b>5502</b>    | <b>7702</b>       | <b>1173</b>      | <b>300315<sup>1</sup></b> | <b>1464</b>                | <b>4417</b>    | <b>297362</b> | <b>n.a.</b> |

<sup>1</sup> Including deliveries from industry

<sup>2</sup> The reported figures are best estimates based on actual measurements and extrapolations.

<sup>3</sup> The reported figures are best estimates based on actual inquiries, measurements and extrapolations.

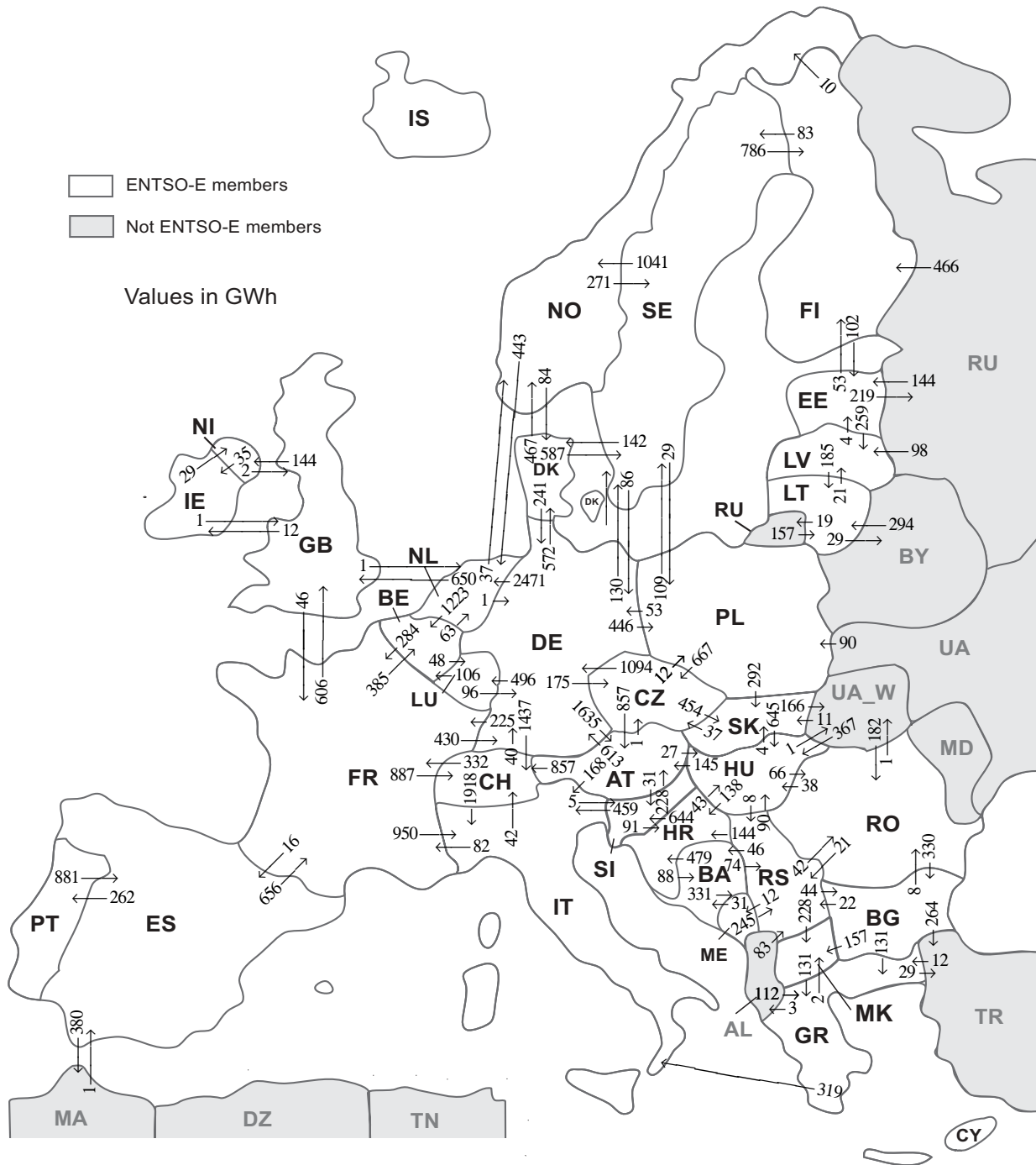
<sup>4</sup> National monthly values as of March 2012

<sup>5</sup> National monthly values as of March 2011

<sup>6</sup> Operational data. Other renewable includes energy from biomass co-firing in conventional thermal units.

All representativities of the national generation and consumption values on page 2 used to calculate values at a representativity of 100% as stated in the table above:

| Countries | Representativities of the national values in % |              |             |                              |                  | Consumption |
|-----------|--|--------------|-------------|------------------------------|------------------|-------------|
|           | Thermal nuclear                                | Fossil fuels | Hydro power | Other renewable except hydro | Non identifiable |             |
| AT        | 100  | 100          | 100         | 100                          | 100              | 100         |
| BA        | 100  | 100          | 100         | 100                          | 100              | 100         |
| BE        | 100  | 100          | 100         | 100                          | 100              | 100         |
| BG        | 100  | 100          | 100         | 100                          | 100              | 100         |
| CH        | 100  | 100          | 100         | 100                          | 100              | 100         |
| CY        | 100  | 100          | 100         | 100                          | 100              | 100         |
| CZ        | 100  | 100          | 100         | 100                          | 100              | 100         |
| DE        | 100  | 100          | 100         | 100                          | 100              | 100         |
| DK        | 100  | 100          | 100         | 100                          | 100              | 100         |
| EE        | 100  | 100          | 100         | 100                          | 100              | 100         |
| ES        | 100  | 100          | 100         | 100                          | 100              | 100         |
| FI        | 100  | 100          | 100         | 100                          | 100              | 100         |
| FR        | 100  | 100          | 100         | 100                          | 100              | 100         |
| GB        | 89   | 100          | 100         | 54                           | 100              | 100         |
| GR        | 100  | 100          | 100         | 100                          | 100              | 100         |
| HR        | 100  | 100          | 100         | 100                          | 100              | 100         |
| HU        | 100  | 100          | 100         | 100                          | 100              | 100         |
| IE        | 100  | 100          | 100         | 100                          | 100              | 100         |
| IS        | 100  | 100          | 100         | 100                          | 100              | 100         |
| IT        | 100  | 100          | 100         | 100                          | 100              | 100         |
| LT        | 100  | 100          | 100         | 100                          | 100              | 100         |
| LU        | 100  | 100          | 100         | 100                          | 100              | 100         |
| LV        | 100  | 100          | 100         | 100                          | 100              | 100         |
| ME        | 100  | 100          | 100         | 100                          | 100              | 100         |
| MK        | 100  | 100          | 100         | 100                          | 100              | 100         |
| NI        | 100  | 100          | 100         | 100                          | 100              | 100         |
| NL        | 100  | 100          | 100         | 100                          | 100              | 100         |
| NO        | 100  | 100          | 100         | 100                          | 100              | 100         |
| PL        | 100  | 100          | 100         | 100                          | 100              | 100         |
| PT        | 100  | 100          | 100         | 100                          | 100              | 100         |
| RO        | 100  | 100          | 100         | 100                          | 100              | 100         |
| RS        | 100  | 100          | 100         | 100                          | 100              | 100         |
| SE        | 100  | 100          | 100         | 100                          | 100              | 100         |
| SI        | 100  | 100          | 100         | 100                          | 100              | 100         |
| SK        | 100  | 100          | 100         | 100                          | 100              | 100         |



Sum of physical energy flows between ENTSO-E countries: **33507 GWh<sup>1</sup>**

Total physical energy flows: **36635 GWh<sup>1</sup>**

<sup>1</sup> Sum of physical energy flows without exchanges between ME-AL and NO-RU.

Not ENTSO-E members:

Albania, Belarus, Morocco, Republic of Moldavia, Republic of Turkey, Russia, Ukraine and Ukraine West

These physical energy flows were measured on the cross-frontier transmission lines ( $\leq 110$  kV) listed in table characteristics of the cross-frontier lines published in the Statistical Yearbook. These values may differ from the official statistics and the exchange balances on page 2.

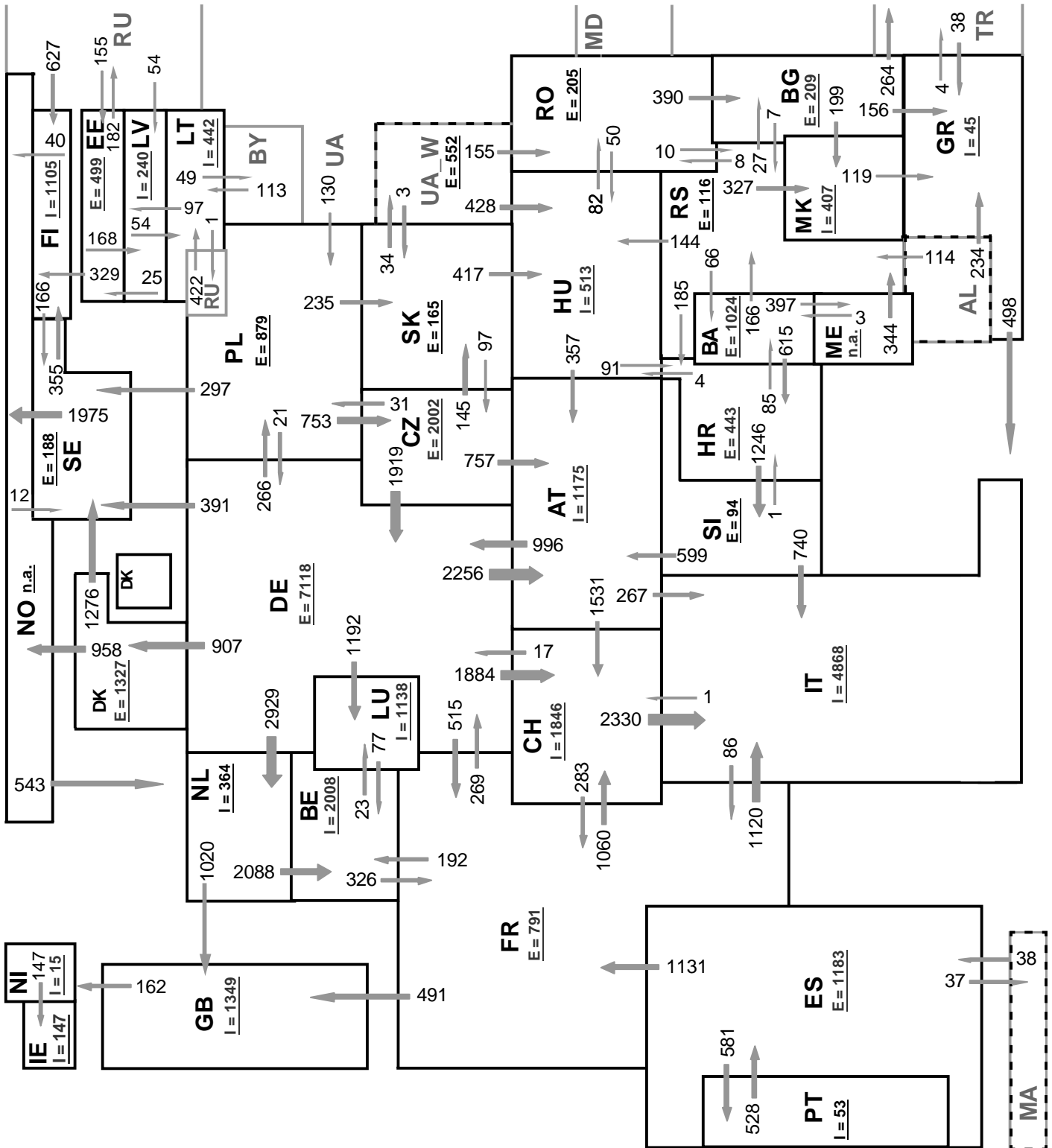
| Outside flows countries | Inside flows of the countries |    |      |     |      |     |      |     |     |     |     |     |     |     |     |    |      |     |     |    |      |     |     |      |      |     |     | Other III <sup>1</sup> |     |     |     |    |     |      |
|-------------------------|-------------------------------|----|------|-----|------|-----|------|-----|-----|-----|-----|-----|-----|-----|-----|----|------|-----|-----|----|------|-----|-----|------|------|-----|-----|------------------------|-----|-----|-----|----|-----|------|
|                         | AT                            | BA | BE   | BG  | CH   | CZ  | DE   | DK  | EE  | ES  | FI  | FR  | GB  | GR  | HR  | HU | IE   | IT  | LT  | LU | LV   | ME  | MK  | NI   | NL   | NO  | PL  |                        | PT  | RO  | RS  | SE | SI  | SK   |
| AT                      | -                             | -  | -    | -   | 857  | 1   | 613  | -   | -   | -   | -   | -   | -   | -   | 27  | -  | 168  | -   | -   | -  | -    | -   | -   | -    | -    | -   | -   | -                      | -   | -   | -   | -  | 31  | -    |
| BA                      | -                             | -  | -    | -   | -    | -   | -    | -   | -   | -   | -   | -   | -   | 479 | -   | -  | -    | -   | -   | -  | -    | 331 | -   | -    | -    | -   | -   | -                      | -   | 74  | -   | -  | -   |      |
| BE                      | -                             | -  | -    | -   | -    | -   | -    | -   | -   | -   | -   | 284 | -   | -   | -   | -  | -    | -   | 48  | -  | -    | -   | -   | 63   | -    | -   | -   | -                      | -   | -   | -   | -  | -   |      |
| BG                      | -                             | -  | -    | -   | -    | -   | -    | -   | -   | -   | -   | -   | 131 | -   | -   | -  | -    | -   | -   | -  | -    | 157 | -   | -    | -    | -   | -   | 8                      | 22  | -   | -   | -  | 264 |      |
| CH                      | 0                             | -  | -    | -   | -    | 40  | -    | -   | -   | -   | 332 | -   | -   | -   | -   | -  | 1918 | -   | -   | -  | -    | -   | -   | -    | -    | -   | -   | -                      | -   | -   | -   | -  | -   |      |
| CZ                      | 857                           | -  | -    | -   | -    | -   | 1094 | -   | -   | -   | -   | -   | -   | -   | -   | -  | -    | -   | -   | -  | -    | -   | -   | -    | 12   | -   | -   | -                      | -   | -   | -   | -  | 454 |      |
| DE                      | 1635                          | -  | -    | -   | 1437 | 175 | -    | 572 | -   | -   | -   | 225 | -   | -   | -   | -  | -    | -   | 496 | -  | -    | -   | -   | 2471 | -    | 446 | -   | -                      | -   | 130 | -   | -  | -   |      |
| DK                      | -                             | -  | -    | -   | -    | 241 | -    | -   | -   | -   | -   | -   | -   | -   | -   | -  | -    | -   | -   | -  | -    | -   | -   | 467  | -    | -   | -   | -                      | -   | 587 | -   | -  | -   |      |
| EE                      | -                             | -  | -    | -   | -    | -   | -    | -   | -   | -   | 53  | -   | -   | -   | -   | -  | -    | -   | -   | -  | 259  | -   | -   | -    | -    | -   | -   | -                      | -   | -   | -   | -  | 219 |      |
| ES                      | -                             | -  | -    | -   | -    | -   | -    | -   | -   | -   | 656 | -   | -   | -   | -   | -  | -    | -   | -   | -  | -    | -   | -   | -    | -    | -   | 262 | -                      | -   | -   | -   | -  | 380 |      |
| FI                      | -                             | -  | -    | -   | -    | -   | -    | 102 | -   | -   | -   | -   | -   | -   | -   | -  | -    | -   | -   | -  | -    | -   | -   | -    | 10   | -   | -   | -                      | 83  | -   | -   | -  | 0   |      |
| FR                      | -                             | -  | 385  | -   | 887  | -   | 430  | -   | 16  | -   | -   | 606 | -   | -   | -   | -  | 950  | 0   | -   | -  | -    | -   | -   | -    | -    | -   | -   | -                      | -   | -   | -   | -  | -   |      |
| GB                      | -                             | -  | -    | -   | -    | -   | -    | -   | -   | -   | 46  | -   | -   | -   | -   | 12 | -    | -   | -   | -  | -    | -   | 144 | 1    | -    | -   | -   | -                      | -   | -   | -   | -  | -   |      |
| GR                      | -                             | -  | -    | 0   | -    | -   | -    | -   | -   | -   | -   | -   | -   | -   | -   | -  | -    | 319 | -   | -  | -    | -   | 2   | -    | -    | -   | -   | -                      | -   | -   | -   | -  | -   | 32   |
| HR                      | -                             | 88 | -    | -   | -    | -   | -    | -   | -   | -   | -   | -   | -   | -   | 43  | -  | -    | -   | -   | -  | -    | -   | -   | -    | -    | -   | -   | 0                      | -   | 644 | -   | -  | -   |      |
| HU                      | 145                           | -  | -    | -   | -    | -   | -    | -   | -   | -   | -   | -   | -   | 138 | -   | -  | -    | -   | -   | -  | -    | -   | -   | -    | -    | -   | 66  | 8                      | -   | -   | 4   | 1  | -   |      |
| IE                      | -                             | -  | -    | -   | -    | -   | -    | -   | -   | -   | -   | 1   | -   | -   | -   | -  | -    | -   | -   | -  | -    | -   | 29  | -    | -    | -   | -   | -                      | -   | -   | -   | -  | -   | -    |
| IT                      | 0                             | -  | -    | -   | 42   | -   | -    | -   | -   | -   | 82  | 0   | -   | -   | -   | -  | -    | -   | -   | -  | -    | -   | -   | -    | -    | -   | -   | -                      | -   | -   | 5   | -  | -   | -    |
| LT                      | -                             | -  | -    | -   | -    | -   | -    | -   | -   | -   | -   | -   | -   | -   | -   | -  | -    | -   | -   | -  | -    | -   | -   | -    | -    | -   | -   | -                      | -   | -   | -   | -  | -   | 48   |
| LU                      | -                             | -  | 106  | -   | -    | 96  | -    | -   | -   | -   | 0   | -   | -   | -   | -   | -  | -    | -   | -   | -  | -    | -   | -   | -    | -    | -   | -   | -                      | -   | -   | -   | -  | -   | -    |
| LV                      | -                             | -  | -    | -   | -    | -   | -    | 4   | -   | -   | -   | -   | -   | -   | -   | -  | -    | 185 | -   | -  | -    | -   | -   | -    | -    | -   | -   | -                      | -   | -   | -   | -  | -   | 0    |
| ME                      | -                             | 31 | -    | -   | -    | -   | -    | -   | -   | -   | -   | -   | -   | -   | -   | -  | -    | -   | -   | -  | -    | -   | -   | -    | -    | -   | -   | -                      | -   | 245 | -   | -  | -   | n.a. |
| MK                      | -                             | -  | -    | 0   | -    | -   | -    | -   | -   | -   | -   | -   | 131 | -   | -   | -  | -    | -   | -   | -  | -    | -   | -   | -    | -    | -   | -   | 0                      | -   | -   | -   | -  | -   | -    |
| NI                      | -                             | -  | -    | -   | -    | -   | -    | -   | -   | -   | -   | 2   | -   | -   | 35  | -  | -    | -   | -   | -  | -    | -   | -   | -    | -    | -   | -   | -                      | -   | -   | -   | -  | -   | -    |
| NL                      | -                             | -  | 1223 | -   | -    | 1   | -    | -   | -   | -   | -   | 650 | -   | -   | -   | -  | -    | -   | -   | -  | -    | -   | -   | -    | -    | -   | -   | -                      | -   | -   | -   | -  | -   | -    |
| NO                      | -                             | -  | -    | -   | -    | -   | 84   | -   | -   | 0   | -   | -   | -   | -   | -   | -  | -    | -   | -   | -  | -    | -   | 443 | -    | -    | -   | -   | -                      | -   | 271 | -   | -  | -   | n.a. |
| PL                      | -                             | -  | -    | -   | 667  | 53  | -    | -   | -   | -   | -   | -   | -   | -   | -   | -  | -    | -   | -   | -  | -    | -   | -   | -    | -    | -   | -   | -                      | 109 | -   | 292 | 0  | -   | -    |
| PT                      | -                             | -  | -    | -   | -    | -   | -    | -   | 881 | -   | -   | -   | -   | -   | -   | -  | -    | -   | -   | -  | -    | -   | -   | -    | -    | -   | -   | -                      | -   | -   | -   | -  | -   | -    |
| RO                      | -                             | -  | -    | 330 | -    | -   | -    | -   | -   | -   | -   | -   | -   | -   | 38  | -  | -    | -   | -   | -  | -    | -   | -   | -    | -    | -   | -   | -                      | 21  | -   | -   | -  | -   | 1    |
| RS                      | -                             | 46 | -    | 44  | -    | -   | -    | -   | -   | -   | -   | -   | -   | 144 | 90  | -  | -    | -   | -   | -  | 12   | 228 | -   | -    | -    | -   | -   | 42                     | -   | -   | -   | -  | 0   |      |
| SE                      | -                             | -  | -    | -   | -    | 86  | 142  | -   | -   | 786 | -   | -   | -   | -   | -   | -  | -    | -   | -   | -  | -    | -   | -   | -    | 1041 | 29  | -   | -                      | -   | -   | -   | -  | -   | -    |
| SI                      | 228                           | -  | -    | -   | -    | -   | -    | -   | -   | -   | -   | -   | 91  | -   | -   | -  | 459  | -   | -   | -  | -    | -   | -   | -    | -    | -   | -   | -                      | -   | -   | -   | -  | -   | -    |
| SK                      | -                             | -  | -    | -   | 37   | -   | -    | -   | -   | -   | -   | -   | -   | -   | 645 | -  | -    | -   | -   | -  | -    | -   | -   | -    | -    | 0   | -   | -                      | -   | -   | -   | -  | -   | 166  |
| Other III <sup>1</sup>  | -                             | -  | -    | 0   | -    | -   | -    | 144 | 1   | 466 | -   | -   | 124 | -   | 367 | -  | -    | 451 | -   | 98 | n.a. | -   | -   | -    | n.a. | 90  | -   | 182                    | 83  | -   | -   | 11 | -   | -    |

Other III<sup>1</sup>: Albania, Belarus, Morocco, Republic of Moldavia, Republic of Turkey, Russia, Ukraine and Ukraine-West

### Sum of the monthly energy flows inside and outside of each country in GWh

|    | flows inside | flows outside |
|----|--------------|---------------|
| AT | 2865         | 1697          |
| BA | 165          | 884           |
| BE | 1714         | 395           |
| BG | 374          | 582           |
| CH | 3223         | 2290          |
| CZ | 880          | 2417          |
| DE | 2654         | 7587          |
| DK | 798          | 1295          |
| EE | 250          | 531           |
| ES | 898          | 1298          |
| FI | 1305         | 195           |
| FR | 1625         | 3274          |
| GB | 1259         | 203           |
| GR | 386          | 353           |
| HR | 850          | 775           |
| HU | 1210         | 362           |
| IE | 47           | 30            |

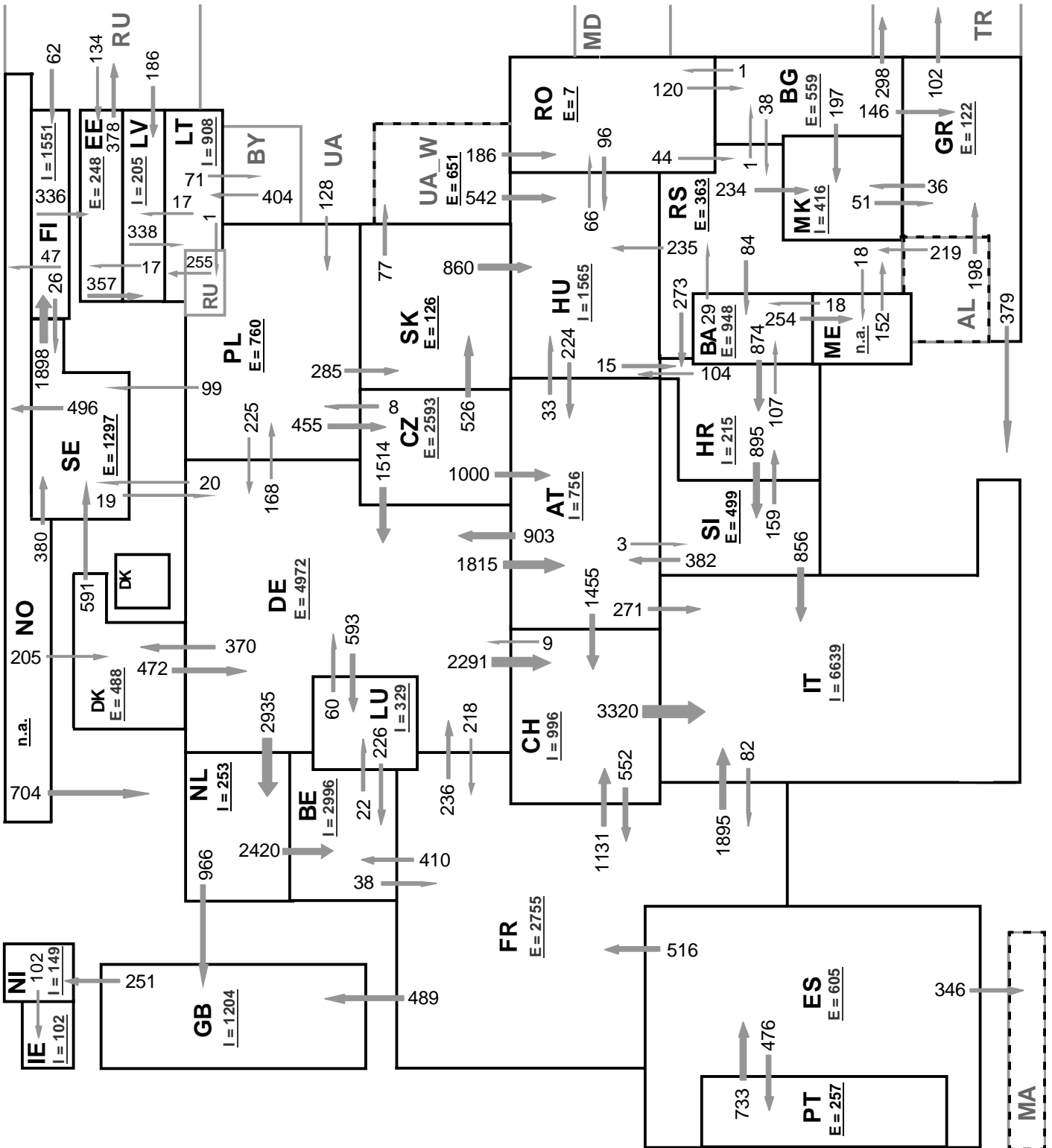
|         | flows inside | flows outside |
|---------|--------------|---------------|
| IT      | 3814         | 129           |
| LT      | 636          | 69            |
| LU      | 544          | 202           |
| LV      | 378          | 189           |
| ME      | n.a.         | n.a.          |
| MK      | 387          | 131           |
| NI      | 173          | 37            |
| NL      | 2978         | 1911          |
| NO      | n.a.         | n.a.          |
| PL      | 577          | 1121          |
| PT      | 262          | 881           |
| RO      | 296          | 390           |
| RS      | 453          | 606           |
| SE      | 1180         | 2084          |
| SI      | 680          | 778           |
| SK      | 761          | 848           |
| ENTSO-E | n.a.         | n.a.          |



Sum of load flows in MW      ENTSO-E = 42652 MW      Total = 45734 MW  
 ( Calculated sum without data between ME - AL and NO - RU )

Synchronous operation with ENTSO-E region

I = Import balance  
 E = Export balance

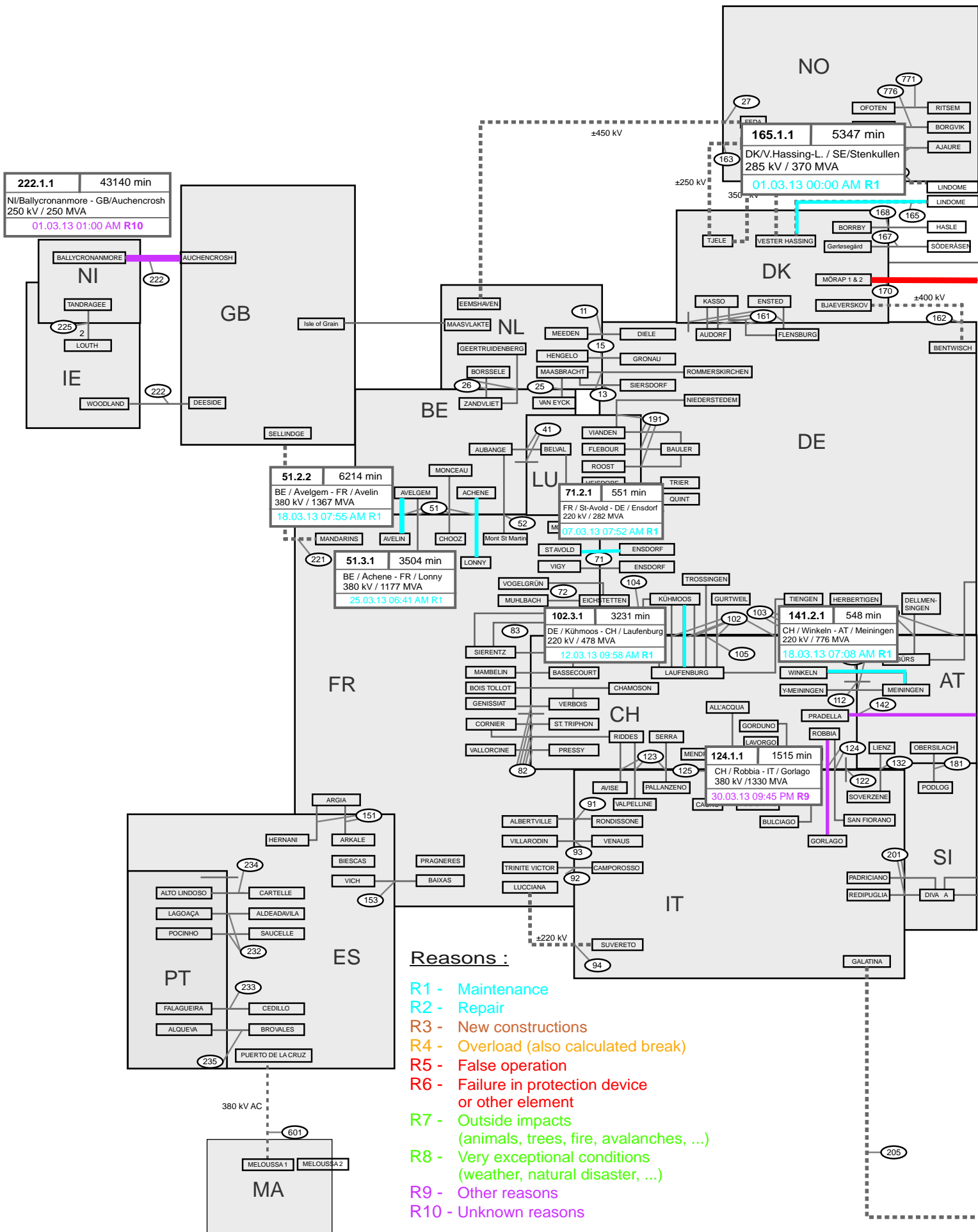


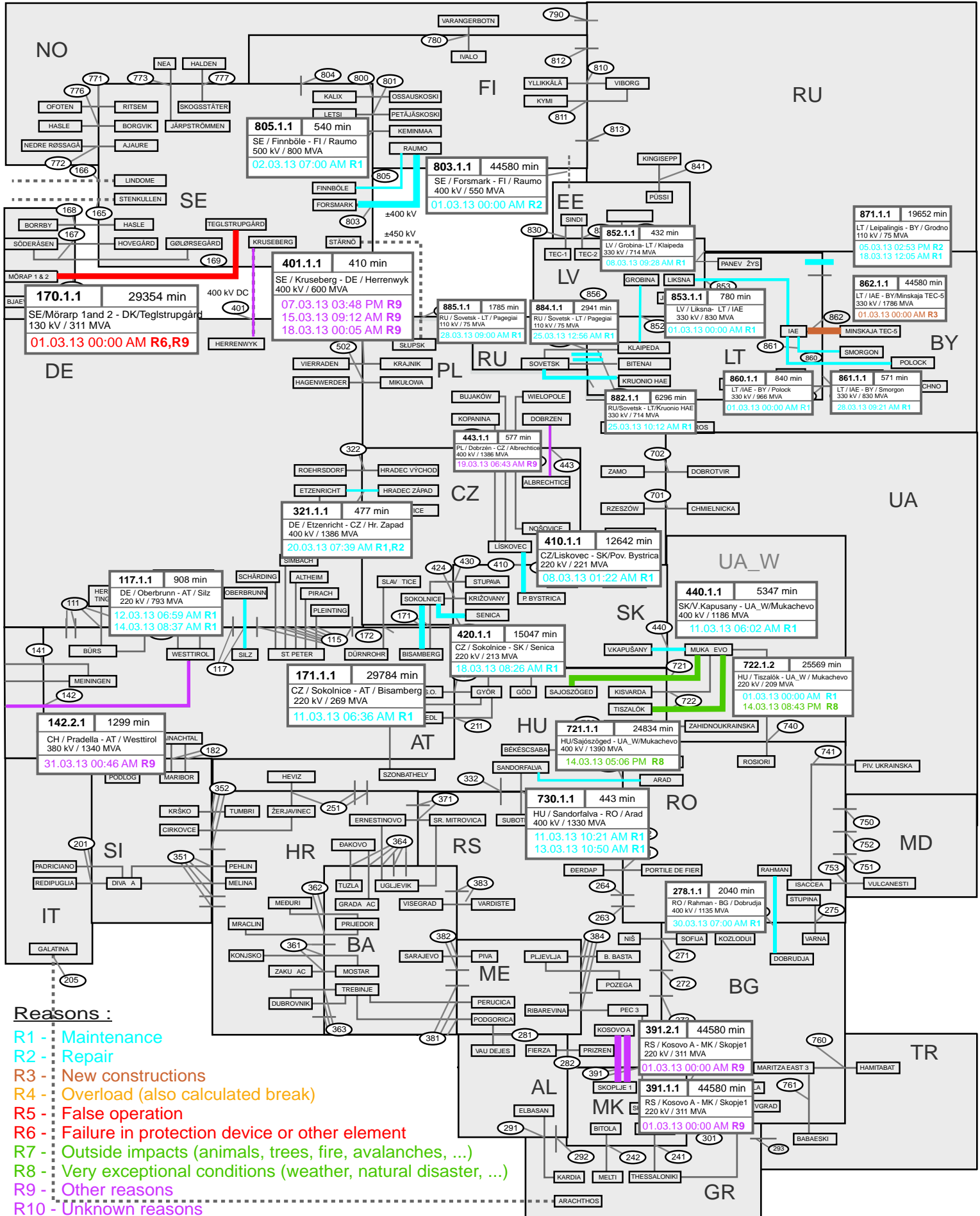
Sum of load flows in MW      ENTSO-E = 41972 MW      Total = 45559 MW  
 ( Calculated sum without data between ME - AL and NO - RU )

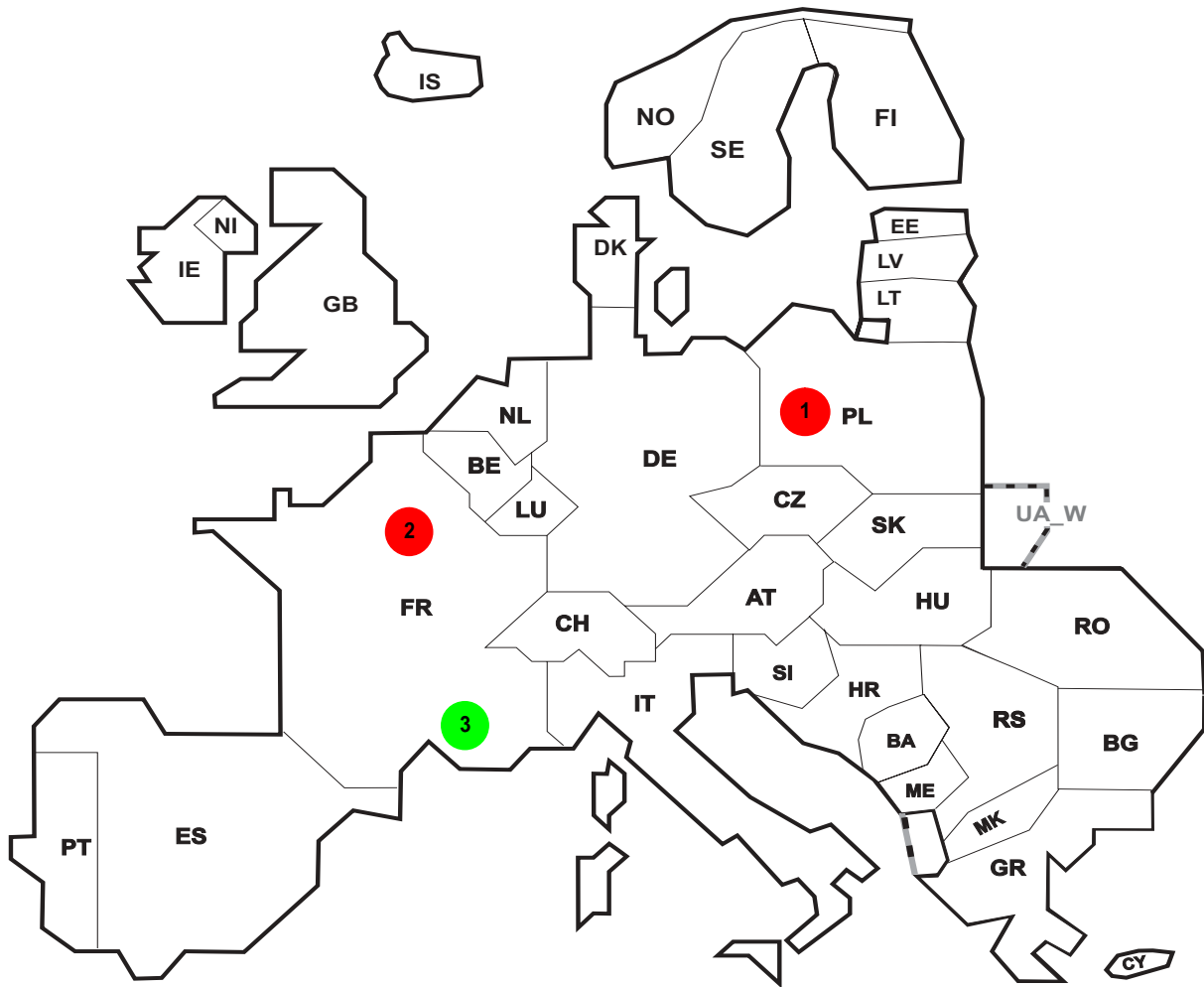
Synchronous operation with ENTSO-E region

I = Import balance  
 E = Export balance









Reasons:

**R4** Overload (also calculated break)

**R5** False operation

**R6** Failure in protection device or other element

**R7** Outside impacts (animals, trees, fire, avalanches, ...)

**R8** Very exceptional conditions (weather, natural disaster, ...)

**R9** Other reasons

**R10** Unknown reasons

| No | Country | Substation | Reason | Energy not supplied [ MWh ] | Total loss of power [ MW ] | Average interruption duration [ min ] | Equivalent time of interruption <sup>1</sup> |
|----|---------|------------|--------|-----------------------------|----------------------------|---------------------------------------|--|
| 1  | PL      | Klecina    | R5     | 12                          | 31                         | 24                                    | 0,045  |
| 2  | FR      | ARRIGHI    | R6     | 38                          | 55                         | 42                                    | 0,040  |
| 3  | FR      | ROGNAC     | R8     | 22                          | 40                         | 33                                    | 0,023  |

Information about incidents in other countries are not shown with energy not supply equal zero or unavailable in the database.

<sup>1</sup> ( year [in min] \* energy not supplied ) / consumption last 12 months

## Highest and lowest load on the 20.03.2013 CET of each country

|                 | Highest       |                             | Low est       |                             | Load<br>representativity<br>% |
|-----------------|---------------|-----------------------------|---------------|-----------------------------|-------------------------------|
|                 | load<br>MW    | variation<br>% <sup>1</sup> | load<br>MW    | variation<br>% <sup>1</sup> |                               |
| AT              | 8681          | 3,8                         | 5901          | 8,7                         | 100                           |
| BA              | 1788          | 4,4                         | 1049          | 6,2                         | 100                           |
| BE <sup>2</sup> | 12212         | 8,9                         | 8962          | 7,3                         | 100                           |
| BG              | 5112          | -0,6                        | 3467          | 7,2                         | 99                            |
| CH              | 9024          | 0,0                         | 6741          | 0,0                         | 100                           |
| CY              | 544           | -7,6                        | 283           | -11,8                       | 100                           |
| CZ              | 9016          | 4,4                         | 7011          | 9,9                         | 100                           |
| DE <sup>3</sup> | 68383         | -6,3                        | 45127         | -6,0                        | 91                            |
| DK              | 5025          | 3,2                         | 3141          | 5,0                         | 100                           |
| EE              | 1304          | 11,4                        | 937           | 16,0                        | 100                           |
| ES              | 35826         | -5,2                        | 22694         | -4,4                        | 98                            |
| FI              | 12251         | 9,4                         | 10397         | 10,3                        | 100                           |
| FR              | 74972         | 9,2                         | 59207         | 9,2                         | 100                           |
| GB              | 55033         | 13,0                        | 33233         | 13,5                        | 92                            |
| GR              | 6821          | 3,9                         | 4054          | 1,0                         | 100                           |
| HR              | 2563          | 6,5                         | 1455          | 2,5                         | 100                           |
| HU              | 5353          | 3,1                         | 3726          | 6,7                         | 100                           |
| IE              | 4091          | 4,8                         | 2457          | 13,9                        | 100                           |
| IS              | 2180          | 6,1                         | 2040          | 6,9                         | 100                           |
| IT              | 46524         | 1,2                         | 27811         | -1,9                        | 100                           |
| LT              | 1572          | 4,0                         | 974           | 7,2                         | 100                           |
| LU              | 932           | 2,9                         | 650           | -5,0                        | 100                           |
| LV              | 1171          | 4,3                         | 774           | 6,5                         | 100                           |
| ME <sup>4</sup> | 515           | n.a.                        | 357           | n.a.                        | 100                           |
| MK              | 1244          | 18,0                        | 782           | 15,3                        | 100                           |
| NI              | 1505          | 8,7                         | 790           | 8,7                         | 100                           |
| NL              | 14891         | 0,2                         | 8836          | -4,9                        | 100                           |
| NO              | 21327         | 27,4                        | 16984         | 31,0                        | 100                           |
| PL <sup>5</sup> | 21545         | 4,3                         | 15070         | 6,3                         | 100                           |
| PT              | 7355          | 5,4                         | 4621          | 5,8                         | 100                           |
| RO              | 7287          | 0,3                         | 5227          | -0,2                        | 100                           |
| RS              | 6034          | 7,9                         | 4143          | 27,0                        | 100                           |
| SE              | 23321         | 31,1                        | 18483         | 34,4                        | 100                           |
| SI              | 1851          | 7,4                         | 1328          | 14,9                        | 100                           |
| SK              | 3820          | 0,9                         | 3019          | 6,4                         | 100                           |
| <b>ENTSO-E</b>  | <b>474433</b> | <b>n.a.</b>                 | <b>334674</b> | <b>n.a.</b>                 |                               |

<sup>1</sup> Variation as compared to corresponding month of the previous year

<sup>2</sup> The reported figures are best estimates based on actual measurements and extrapolations.

<sup>3</sup> A comparison with previous figures may be limited for statistical reasons related to renewable energies feed-in like direct marketing.

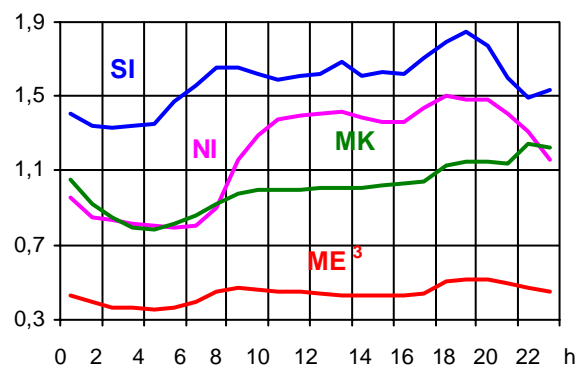
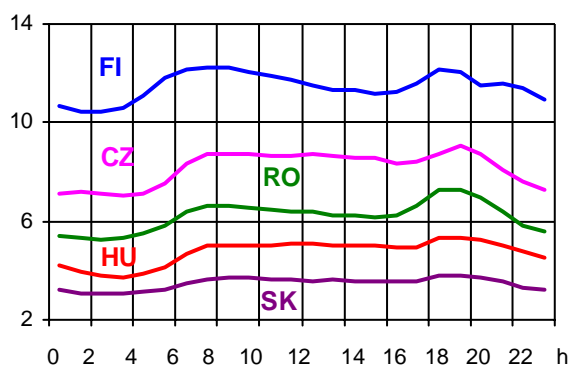
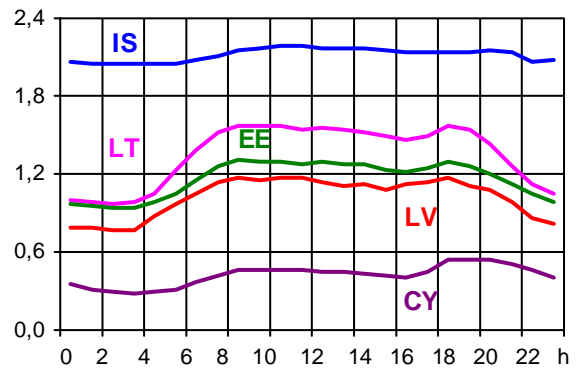
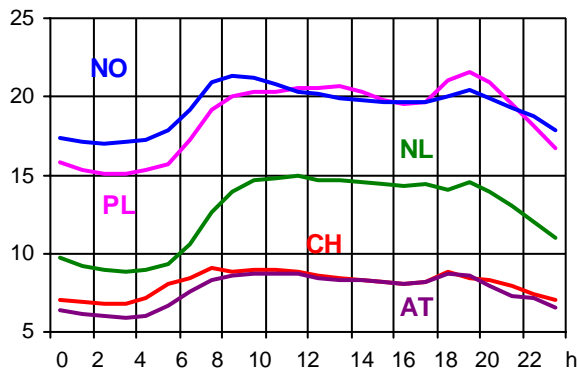
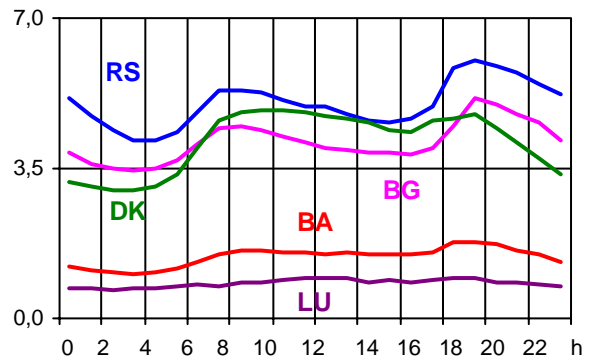
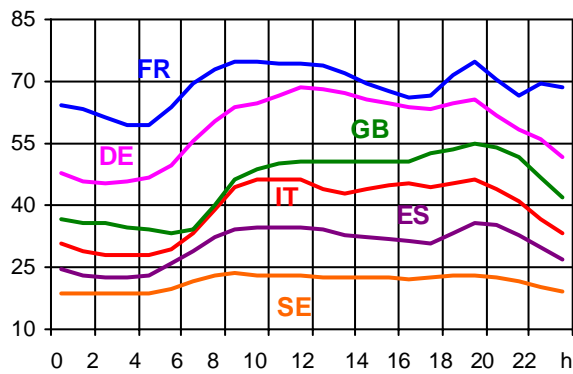
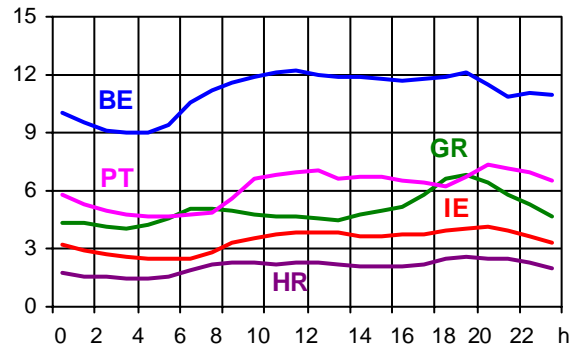
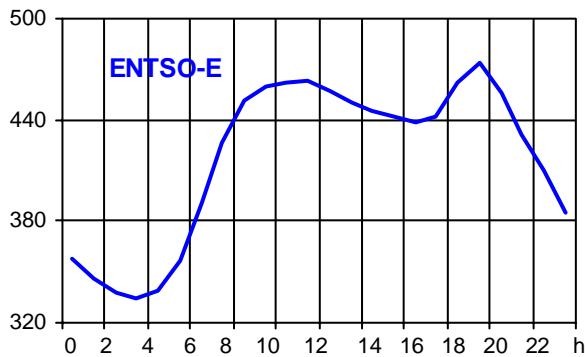
German TSOs are working on a modified system concerning gathering of data of voltage levels downstream the transmission grid. There may be remarkable deviations in future and current data might no longer be directly comparable with historical data. Also already available data for past periods may be changed retroactively and significantly in future.

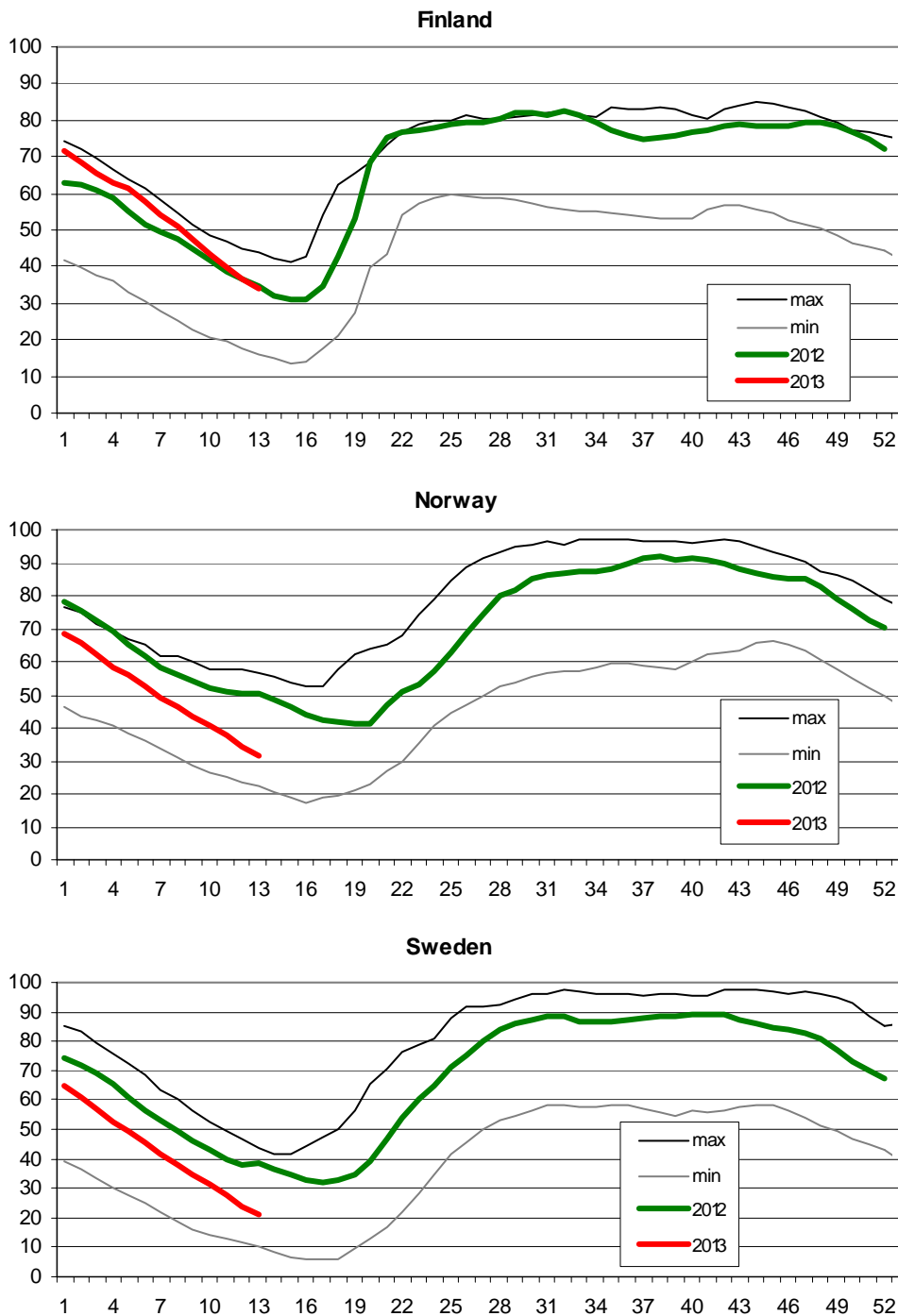
<sup>4</sup> Monthly load values as of 21 March 2012

<sup>5</sup> Operational data

Consumption hourly load curves on 20.03.2013 CET

Values in GW





**Finland:** Reservoir capacity: 5.530 GWh  
Minimum and maximum limits are based on values for the years 1990-2002

**Norway:** Reservoir capacity: 81.729 GWh  
The statistics are supposed to cover 97.1 percent of the total reservoir capacity.  
The total reservoir capacity is 84 147 GWh  
Minimum and maximum limits are based on values for the years 1990-2003

**Sweden:** Reservoir capacity: 33.758 GWh  
Minimum and maximum limits are based on values for the years 1950-2006

## Contact

Avenue de Cortenbergh, 100  
B-1000 Brussels – Belgium  
Tel + 32 2 741 0950  
Fax + 32 2 741 0951

[info@entsoe.eu](mailto:info@entsoe.eu)  
[www.entsoe.eu](http://www.entsoe.eu)

